

**BULGARIAN ACADEMY OF SCIENCES
INSTITUTE OF GENERAL AND INORGANIC
CHEMISTRY**

**TRAINING WORKSHOP ON
METHODS AND MATERIALS
FOR CLEAN TECHNOLOGIES**

METMAT 2022



**SEPTEMBER 07 – 10, 2022
SANDANSKI, BULGARIA**

B05 MARIYA KALAPSAZOVA, EKATERINA ZHECHEVA AND RADOSTINA STOYANOVA ALUMINUM DOPING AND Al_2O_3 COATING FOR IMPROVING THE ELECTROCHEMICAL PERFORMANCE OF LAYERED $Na_{2/3}Ni_{1/2}Mn_{1/2}O_2$	43
B06 NIKOLA DRENCHEV, OLEG LAGUNOV, DIANA NIHTIANOVA, IVANKA SPASSOVA, ELENA IVANOVA, MIHAIL MIHAYLOV, DIMITAR PANAYOTOV AND KONSTANTIN HADJIIVANOV ADSORPTION OF CO_2 ON OXIDIZED AND REDUCED NANOPARTICULATE CERIA.....	45
B07 SONYA HARIZANOVA, EKATERINA ZHECHEVA, VASIL VALCHEV, RADOSTINA STOYANOVA CONTROL OF THE THERMOELECTRIC ACTIVITY OF $LaCoO_3$ PEROVSKITES THROUGH MULTIPLE METAL SUBSTITUTION ON CO-SITES	47
B08 VIOLETA KOLEVA, SILVA STANCHOVSKA, SONYA HARIZANOVA AND RADOSTINA STOYANOVA MIXED PHOSPHATE-SULFATE NASICON PHASE AS ELECTRODE MATERIAL IN SODIUM-ION BATTERIES	49
B09 YANA DIMITROVA, PETER TZVETKOV AND DANIELA KOVACHEVA SYNTHESIS AND CRYSTAL STRUCTURE OF NEW LEAD INDIUM PHOSPHATE $PbIn_2P_4O_{14}$	51
B10 YANISLAV DANCHOVSKI, HRISTO RASHEEV, RADOSTINA STOYANOVA, ALIA TADJER COORDINATION POLYMERS AS ELECTRODE MATERIALS FOR LI-ION BATTERIES.....	53
B11 KRISTINA CHAKAROVA, MIHAIL MIHAYLOV, ELENA IVANOVA, VIDELINA ZDRAVKOVA, DIMITAR PANAYOTOV AND KONSTANTIN HADJIIVANOV CAN TWO CO_2 MOLECULES BE SIMULTANEOUSLY BOUND TO ONE Na^+ SITE IN NAY ZEOLITE?	54
B12 MANUELA OYKOVA, MARGARITA POPOVA, IVALINA TREDAFILOVA, YAVOR MITREV, PAVLETTA SHESTAKOVA, MAGDOLNA MIHÁLYI AND ÁGNES SZEGEDI HYDRODEOXYGENATION OF LEVULINIC ACID TO γ -VALEROLACTONE OVER ZSM-5/MESOPOROUS SILICA SUPPORTED CU-NI COMPOSITE CATALYSTS.....	56
B13 L. SOSEROV, D. MARINOVA, V. KOLEVA, A. STOYANOVA, R. STOYANOVA COMPARATIVE STUDY OF MIXED NICKEL-MANGANESE HYDROXIDES/OXIDES AND PHOSPHATES AS ELECTRODES FOR HYBRID SUPERCAPACITORS	58
B14 S. STANCHOVSKA, M. KALAPSAZOVA, S. HARIZANOVA, V. KOLEVA, R. STOYANOVA SODIUM TITANATE NANOWIRES ($Na_2Ti_3O_7$ AND $Na_2Ti_6O_{13}$) AS ANODE MATERIALS IN SODIUM-ION BATTERIES	60
B15 SERGI PLANA-RUIZ, KERSTIN WISSEL, MOHAMMAD ALI NOWROOZI, OLIVER CLEMENS AND UTE KOLB THREE-DIMENSIONAL ELECTRON DIFFRACTION AS AN IMPORTANT CHARACTERIZATION TOOL FOR ALL-SOLID-STATE BATTERY TECHNOLOGY.....	62
B16 SIMEON STANKOV, KRUM BANOV AND OFELIYA KOSTADINOVA Cu_2SnS_3 APPLICATION AS AN ACTIVE MATERIAL FOR LI-ION BATTERIES AND CATALYST FOR METAL-AIR SYSTEMS.....	64
B17 LYUBEN BORISLAVOV, ILIA KICHEV, RADOSTINA STOYANOVA AND ALIA TADJER MACHINE LEARNING ASSISTED DESIGN OF NOVEL ORGANIC REDOX MATERIALS FOR METAL-ION BATTERIES	65

Comparative Study of Mixed Nickel-Manganese Hydroxides/Oxides and Phosphates as Electrodes for Hybrid Supercapacitors

L. Soserov¹, D. Marinova², V. Koleva², A. Stoyanova¹ and R. Stoyanova²

¹ Institute of Electrochemistry and Energy Systems "Acad. Evgeni Budevski", Bulgarian Academy of Sciences, 1113 Sofia, Bulgaria

² Institute of General and Inorganic Chemistry, Bulgarian Academy of Sciences, 1113 Sofia, Bulgaria
E-mail: manasieva@svr.igic.bas.bg

Keywords: hybrid supercapacitors, Ni/Mn oxides, hydroxides and phosphates, synergetic effect, capacitance performance, alkaline electrolyte.

Hybrid supercapacitors with the composite electrode materials display high energy density at the expense of the reduced cycle stability. In the last few years nanostructured transition metal oxides, hydroxides and phosphates as a new type of energy storage materials have widely attracted attention. Herein, we provide data on the electrochemical performance of hybrid supercapacitors based on mixed nickel/manganese oxides, hydroxides and phosphates in the form of structured and multiphase composites.

Mixed nickel-manganese oxides with ilmenite and spinel structures (NiMnO_3 and $\text{Ni}_{1.5}\text{Mn}_{1.5}\text{O}_4$), hydroxides with layered structures ($\beta\text{-Ni}_{1/2}\text{Mn}_{1/2}(\text{OH})_2$), and phosphates with olivine and maricite structures ($\text{LiNi}_{1/2}\text{Mn}_{1/2}\text{PO}_4$ and $\text{NaNi}_{1/2}\text{Mn}_{1/2}\text{PO}_4$), obtained from different precursors, have been investigated in a mixed alkaline electrolyte (KOH with LiOH). The electrochemical performances of composites electrodes are determined by galvanostatic charge/discharge and long-term tests in Swagelok-type electrochemical cell (see Fig. 1).

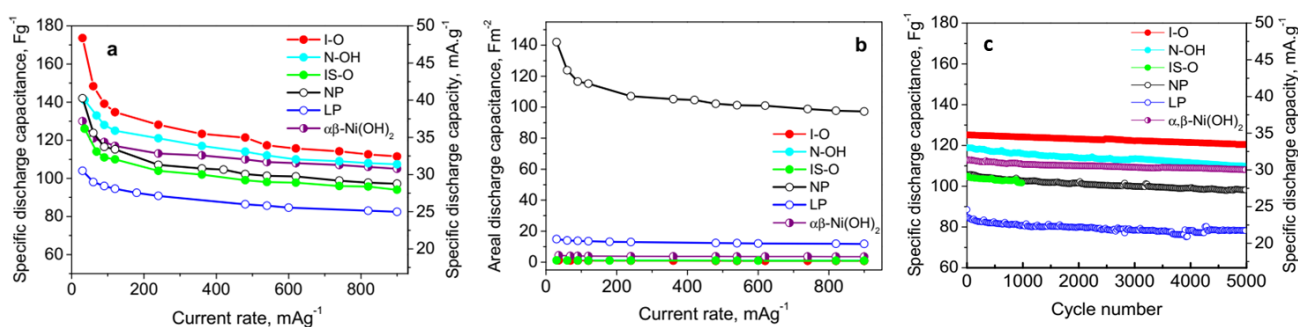


Figure 1. Specific discharge capacitance (a) and areal discharge capacitance (b) as a function of the current load of supercapacitor cells with different composite electrodes (c) Specific discharge capacitance (capacity) as a function of the cycle number at 240 mA/g of supercapacitor cells with different composite electrodes. For the sake of comparison, the discharge capacitance is also calculated in mAh/g.

The structure, morphology and porous texture properties of composites are analyzed by *post-mortem* powder X-ray diffraction (XRD), scanning electron microscopy (SEM) and low-temperature nitrogen adsorption, respectively.

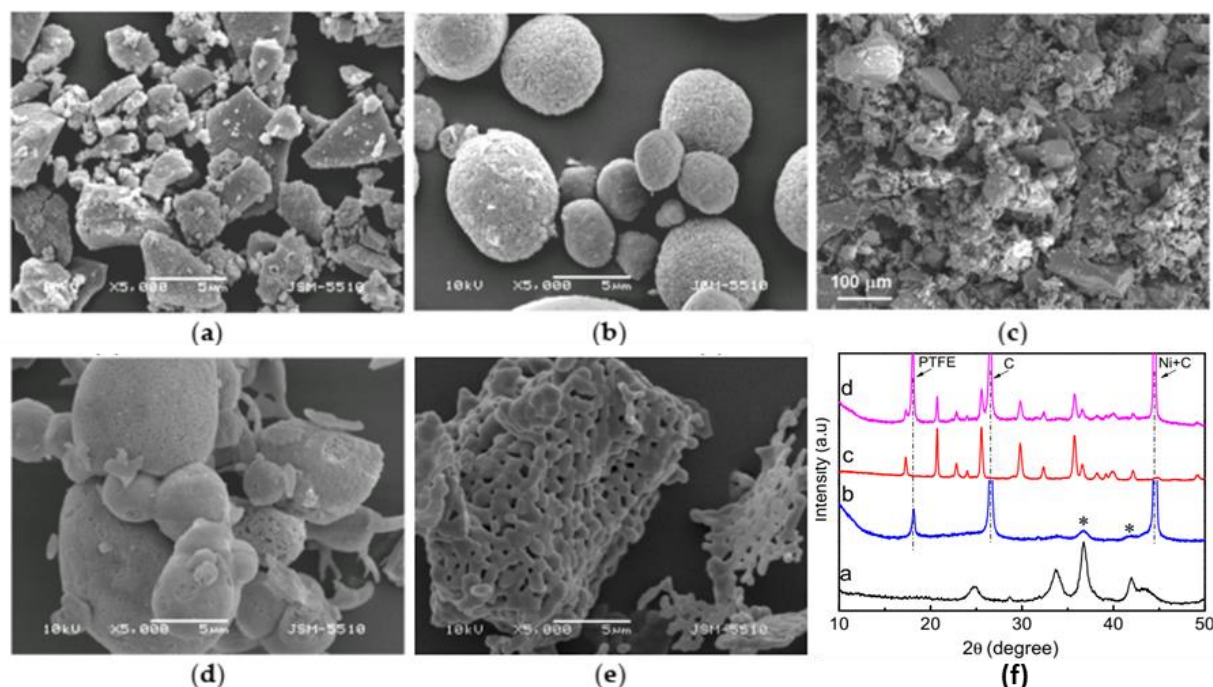


Figure 2. SEM images: **(a)** β - $\text{Ni}_{1/2}\text{Mn}_{1/2}(\text{OH})_2$, **(b)** ilmenite NiMnO_3 , **(c)** mixture of NiMnO_3 and $\text{Ni}_{1.5}\text{Mn}_{1.5}\text{O}_4$, **(d)** olivine $\text{LiNi}_{1/2}\text{Mn}_{1/2}\text{PO}_4$, **(e)** maricite $\text{NaNi}_{1/2}\text{Mn}_{1/2}\text{PO}_4$; **(f)** *Ex situ* XRD patterns of ilmenite (b) and phospho-olivine (d) electrodes after 5000 cycles. For the sake of comparison, the pristine ilmenite (a) and phospho-olivine (c) are also given. Symbols (*), (PTFE), (C) and (Ni) denote the peaks due to the ilmenite phase, PTFE, graphite and Ni foam, respectively.

The analytical results confirm that the investigated three types of crystal structures: oxides with ilmenite and spinel structures, hydroxides isostructural to β - $\text{Ni}(\text{OH})_2$ and phosphates with olivine and maricite structures are able to simultaneously accommodate nickel and manganese ions [1]. The capacitance performances of oxides, hydroxides and phosphates depend mainly on whether the electrode contains simultaneously contains nickel and manganese in a ratio of one-to-one and, to a lesser extent, on the type of anionic constituents. Cycling stability becomes better when the morphology consists of spherical aggregates. Based on these findings, one can predict the electrode with the best capacitance performance.

References

1. L. Soserov, D. Marinova, V. Koleva, A. Stoyanova and R. Stoyanova, *Batteries* 8 (2022) 51.

Acknowledgements: The Bulgarian National Science Fund, grant number KP-06-OPR 04/5, Operational Programme “Science and Education for Smart Growth” 2014-2020, co-funded by the EU from the European Regional Development Fund, grant number NoBG05M2OP001-1.001-0008 and project Д01-272/02.10.2020 (European Network on Materials for Clean Technologies, TwinTeam) are acknowledged for the financial support.